



Pukenui Forest Ranger Report: 13/07/2017

Trapping:

Data summary (some data still missing for the year).

MONTH	STOAT	CAT	HH	POSSUM	WEASAL	RATS	SE	BT
JANUARY						7		
FEBRUARY	5	1		1		10	1	
MARCH	4		6			49	11	1
APRIL		1	4			11	1	
MAY	1	1	7		1	32	12	
JUNE	2					11	9	
Total to date	12	3	17	1	1	110	34	1

Missing trap: The missing buffer trap has been returned

On Monday (10th) I spent an interesting day in the field with Kane (NRC), Dai (NorthTec) and the team from Encounter Solutions setting up some hubs and nodes for the Celium network. A system being developed for remote monitoring of traps and many other tools. This has been used in the Cape to City project in Hawkes Bay and the council there says: "In most cases, the cost of labour for pest trapping is 40-70% of the total cost of an operation. Wireless technology will reduce this labour cost by up to 50-80% depending on the control scenario."

NRC has hubs on Mt Tiger and some traps fitted with the nodes. Kane has asked if we could carry some nodes with us to see if we can ping the hubs from Pukenui. This technology is still in development but has potential for future use.

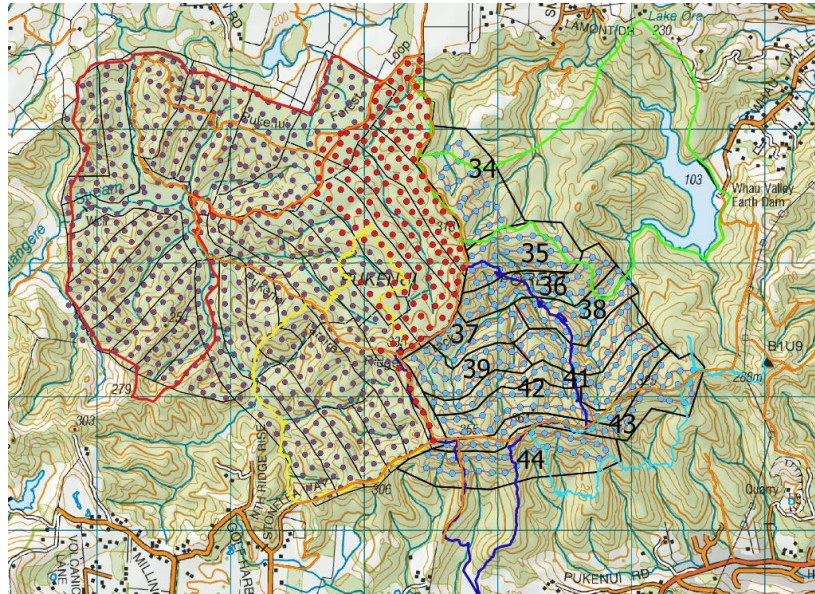


Toxin & Bait Stations:

Planning is underway for the 1080 operation next year. I had a productive meeting with Clea Gardener touching several topics but focused mainly on the use of 1080. The plan from Nigel using 1080 in early autumn rather than late winter has been queried by NRC and others. As we will be getting kiwi all over the weight threshold to be affected by stoats, a later application of 1080 (July onwards) would potentially be of greater benefit if translocated birds were to breed in their first winter. Care and thought will be needed in the creation of buffers and watercourses.



The expansion of the bait station blocks will begin shortly, with the bulk of the new stations put together and drop into two storage dumps in the forest by helicopter. A total of 278 new stations need to be installed into Blocks 34 to 44.



Kiwi:

Four Kiwi Listening Devices (KLD) we deployed in four locations across the forest, each was recording from 17:45 to 23:30 for between 12-14 nights. These are yet to be looked at in depth using the Birdcall Analyzer program.

A meeting with the other members of the Kukupa Collective took place to help the trust move forward with the public awareness/ education program around the kiwi translocation. A design meeting took place and discussed how to promote the "Let's bring kiwi back to Whangarei!" theme. Options for designs of colouring in placemats, posters, bookmarks and potentially a community art exhibition themed around the forest.

Other:

I attended the Northland Biodiversity Forum meeting in Kerikeri last Monday, the unconfirmed minutes have been appended. The potential Biodiversity Hub hosted by WDC is an interesting development.

The weed control plan for the Quarry Arts centre has been sent o Ellie and I am awaiting feedback from them.

A H&S notebook for recording any issues from near misses to accidents (including minor injuries such as cuts and scratches and minor strains) and new hazards identified will be kept in the container for now.

Upcoming Activities:

Tracking Cards: August

New bait station setup

Kukupa dawn counts



**Meeting Notes from Wednesday 5 July
Held at FNDC, John Butler Centre, Kerikeri
Meeting time 10-12**

Attending: Joanna Wilson (WDC), Ngaire Tyson (KiwiCoast/Landcare Trust), Nathan xxx (Pukenui Trust), Katrina Hansen (NRC), Louise Wilson (FNDC)

Apologies: Meryl Carter (Nga Whenua Rahui), Andrew Kirk (Fish and Game), Mark Schreurs (KDC)

Agenda Items:

1. Discussion about presentations at the Biosecurity Bonanza

Discussed the national scale 4 year Landcare Research project into measuring kiwi populations using DNA and other tools. Also their research into behavior change psychology to promote kiwi conservation behaviours. General agreement that it would be great to use Northland as a case study. John Innes InnesJ@landcareresearch.co.nz is the lead Landcare person for this project. Wendy Sporle of Kiwi's for Kiwi is assisting with the behaviour change study.

2. FNDC progress with Dog Control Bylaw

The proposed bylaw is being reviewed by elected members. The elected members will decide whether to endorse the bylaw or require further consultation. Neil Miller is the FNDC contact for the dog bylaw. FNDC is promoting responsible dog ownership. A "dog day" was held in Kaikohe. Approx 95 dog owners attended and 85 took up free vouchers for microchipping and neutering. Another dog day will be held in Kaitaia soon. Ana Mules is the contact for this. Funding for this came from the Dept Internal Affairs who are reviewing the Dog Control Act 1996. The contact at DIA is Fergus Broom.

3. Development of NPS Biodiversity – what would the forum like to see in the NPS?

The NPS should consider:

- incentives, enabling and funding biodiversity protection
- sustaining existing community conservation groups
- be grass root up and work with whats already on the ground and working
- assist with SOE monitoring for terrestrial biodiversity indicators

The person at MFE helping the NPS working group is Jenna Bishop <Jenna.Bishop@mfe.govt.nz>



4. Biodiversity monitoring and indicators – what data do we already have about the quality of habitats? What data do we need?

Discussed how there is a lack of data and what data there is patchy and not easily accessible. Discussed the merits of digital data collection templates, websites and portals.

Louise will follow up with Reconnecting Northland and Landcare Trust and Kiwi Coast to see what info we have. NRC has riparian and aquatic data. Katrina to follow up with Lisa Forester about whether there is web domain for this.

Identifying key indicators and representative samples would enable some useful state and trend data to be collected. Preference of community groups to spend time/money on restoration not monitoring. Monitoring needs to be cheap and easy.

5. Identifying SNA's – ideas for best practice

Louise explained that James Griffin (NRC) is organizing the use of the "zonation" programme for identifying SNA's. Louise outlined potential ways of managing SNA's.

6. Swamp kauri COP

MPI has worked with other agencies to develop a code of practice for swamp kauri extraction. The contact person in Northland is Aaron Thompson <Aaron.Thompson@mpi.govt.nz>

7. Joanna Wilson, Biodiversity Hub

Joanna will be presenting a report on 20 July to WDC about using a building next the Fernery as a Biodiversity Hub. Outfitting the building would cost approx. \$100,000. It could be used by conservation groups for hotdesks, workshops, storing traps, resources etc. There are 18 similar hubs around NZ. Contact Joanna Wilson joanna.wilson@wdc.govt.nz for details.

Roundtable – what has your agency been doing?

Meryl Carter, Nga Whenua Rahui

2 fencing projects finally approved by Minister, one at Parengarenga Harbour and a further at Panguru/Rangi Point area in conjunction with NRC/ Far North and landowners. A sand dune planting and weed control programme approved by Minister for part of the Takou Bay reserve area. These 3 projects are in the throws of being signed by land owners before final registration of their covenants.

A further fencing project being proposed this round at Te Whangae/ Pakaraka with NRC and landowners. Many thanks to Lisa Forrester and Katrina Hansen for assisting with biodiversity assessments and planning of fencing.

Pest control programmes are currently in action on NWR protected areas at Rawhiti, Unuwahao/Muriwhenua and Matauri Bay. A further pest control programme proposed for Waikare protected areas in conjunction with the Russell State Forest programme.

Please ask forum members to forward any queries or interest from Maori landowners to me regarding protection of biodiversity values on their lands. Also our MKT fund is interested in applications for assisting the retention of traditional knowledge regarding managing biodiversity and cultural values. We have one application approved from Te Rarawa Runanga to assist with the upcoming National Kaitiaki Hui being held in Ahipara.

Katrina Hansen, NRC



- Environment Fun received 175 applications which were completed, almost fully subscribing the \$800,000 fund.
- Next years fund will have \$800,000 (approx.) available for applicants with waterway, coastal dune, and wetland restoration projects.
- NRC Biodiversity Strategy for freshwater and maine biodiversity due to be released in July/ August.
- Wildlands ranked 154 wetlands. Katrina works with landowners to look after those. There are 25 that have been monitored in the last 5 years and will be monitored again. This could be a good sampling approach for terrestrial SNA's in furture.
- Bittern are even more endangered than kiwi. This is what a bittern looks like:

<http://nzbirdsonline.org.nz/species/australasian-bittern>



Nathan, Pukenui Trust

- Pukenui Trust is a Council controlled trust that is expanding its bait station grid and buffer lines with funding received from NRC.
- Pukenui Estate is a group of private properties that have decided to do some trapping on their land and adjacent reserve.
- Awaiting a kiwi translocation that will be the first urban kiwi relocation in NZ!
- Kauri dieback stations need some attention now that there is dieback at Whangarei heads.

Joanna Wilson, WDC

- Restructures at WDC have meant Joanna is now a Strategic Policy Advisor not an environment coordinator. She can still be contacted at WDC and can redirect community group queries as required.



- Central government has provided \$258, 000 over 3 years for water quality initiative in the Upper Hatea and Whangarei Falls. A communication plan and brochures will be developed soon.

Louise Wilson, FNDC

- Next 6 months will be writing draft biodiversity, rural and earthworks rules.

Ngairé Tyson, Kiwi Coast and Landcare Trust

- The Northern Brown Kiwi has had an improvement in its threat status according the Parliamentary Commissioners report on birds. **Current status?**
- Landcare will be using North Tec students to assist. Other groups may like to do this too.
- Young/new trappers need assistance with overheads such as traps and insurance. Many don't have the knowledge of how to become self employed and need an employer.
- End of financial year reports will be out soon.
- Focus on sustaining existing groups.